

RISD Museum

By Faith Linscott

Art Nouveau

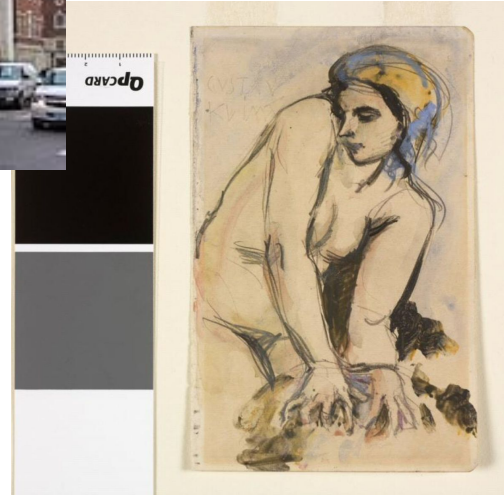


- Predominant years style originated = 1890-1910 (International)
- Central figures of the style = Gustav Klimt (Painting), Henri de Toulouse-Lautrec (Painting/Drawing), Antoni Gaudí i Cornet (Architecture), Louis Majorelle (Furniture maker)
- Central tenants of the style = Art Nouveau is inspired by natural forms and structures. Art Nouveau's signature elements are asymmetrical lines, ornamental design, and flowers, vines, wings, etc. to create the aesthetic of elegance.

Gustav Klimt



Nude
Mid 1800s-Early
1900s
Pencil and watercolor
on paper



Gustav Klimt
The Kiss
1907-1908
Oil and gold
leaf on canvas



RISD

Hugnet Freres
Fireplace surround
Ca. 1900
Walnut with glazed
earthenware and
copper



Curved lines

Asymmetrical lines

Carved nature:

- Sunflowers

- Vines

- Landscape